

# DYNABREEZE

TRADE QUALITY SINCE 1995

## INDUSTRIAL 450MM OSCILLATING FLOOR FAN

FACTORY  
3 YEAR  
WARRANTY



MODEL FA-23082

## Instruction User Manual & Warranty



**CAUTION:** Read the Assembly & Safety Instructions before operating and retain for future reference

# Thank you & Congratulations on the purchase of your Dynabreeze Industrial 450mm Oscillating Floor Fan

---

To find out more information on this product,  
please visit [www.dynabreeze.com.au](http://www.dynabreeze.com.au) or contact:

**Tradeware**

Address 45 Birralea Rd, Regency Park SA 5010  
Phone AU 1300 658 494 NZ 0800 689 960  
Email [info@tradeware.com.au](mailto:info@tradeware.com.au)  
Website [www.tradeware.com.au](http://www.tradeware.com.au)

**SPECIFICATIONS**

Model	FA-23082
Voltage	220-240V
Frequency	50Hz
Motor Power	120W
Air Volume	120m <sup>3</sup> /min
Max Speed	1350 RPM
Fan Speed	3
Diameter	450mm
Product Weight	7.5KG



## OPERATION CONDITIONS & SAFETY PRECAUTIONS

**WARNING:** When using electrical appliances, basic safety precautions should be followed to reduce the risk of fire, electric shock and injury to persons or property.

---

- To avoid a hazard due to instability of the appliance, it must be placed on an even, flat surface.
- Do not operate this appliance with a damaged cord or plug after the appliance has been damaged in any manner.
- Before each use, check for any damaged parts, and have it replaced or repaired by the manufacturer or a qualified electrician.
- Connect to properly grounded power outlet only. No other appliance should be plugged into the same outlet.
- Do not run the power cord over carpeting or other heat insulators. Do not cover the cord. Keep cord away from traffic areas.
- Switch off and unplug the appliance before moving, cleaning or making any repairs or servicing.
- Keep safety guards/grilles in place and don't operate the machine with them removed.

**WARNING:** Touching of moving blades can cause serious injury.

- Do not insert fingers or anything through the grille.
- Do not wear jewellery or loose clothing that could be caught by the rotating blades.

- Never leave the appliance running unattended, turn the power off.

**WARNING:** Exercise caution and use reasonable supervision when appliance is used near children to ensure that they do not play with the appliance.

- This appliance is not intended for use by persons (including children) with reduced physical, sensory or mental capabilities, or lack of experience and knowledge.
- Keep the area around the fan clear and suitable distance from objects that may be suctioned into the fan.
- Pack away in a dry place in the original carton when not in use.

**WARNING:** Do not use the appliance in a bathroom or in the immediate surroundings of a bath, a shower or a swimming pool. Keep all parts away from water or any other liquids.

**CLEANING:** Turn off, remove any dust build up with a soft brush, wipe the surface of the unit with a damp soft cloth using a mild detergent (no harsh chemicals).

## PARTS IDENTIFICATION



- A Power Cord
- B On/Off Speed Control Dial
- C Oscillation Switch
- D Steel Fan Stand
- E Safety Grille
- F Fan Blade
- G Rubber Feet x 4
- H Electric Motor
- I Carry Handle

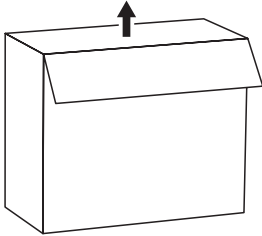
# ASSEMBLY & OPERATION

SCAN QR CODE  
TO REFER TO THE  
ASSEMBLY &  
OPERATION VIDEO

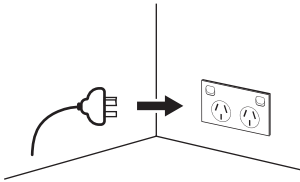


## Operating the fan

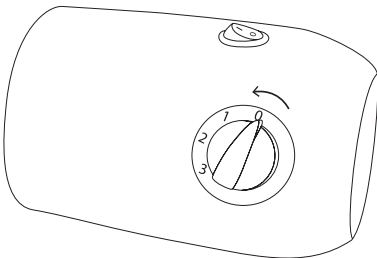
1. Unpack the fan from the box. Remove plastic wrapping and check all parts are included.



2. Plug the cord into the power outlet after reading these instructions first.



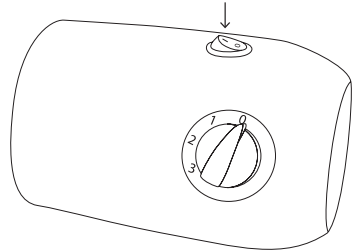
3. Turn on the fan by turning the speed control dial from 0 to 1, 2 or 3.



## Oscillate

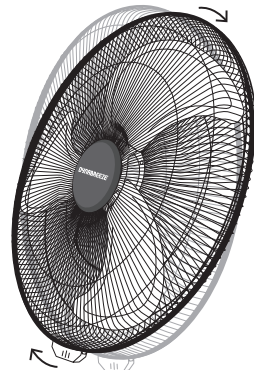
Oscillation range of 85°.

Set the oscillation switch to the "I" position to oscillate and the "0" position to stop.



## Adjustments: Vertical Tilt Adjustment.

Grip the top and bottom of the grille firmly and tilt to the desired position.



## WARRANTY

Under the Australian Consumer Law (ACL) or NZ Consumer Guarantees Act (CGA), you are entitled to a 12 month replacement or refund for product failure and compensation for any other reasonably foreseeable loss or damage.

Tradeware offers a **3 Year Warranty**. The additional warranties, terms and conditions are outlined on the website [www.dynabreeze.com.au](http://www.dynabreeze.com.au) under the Support tab.

Under Support you can also **Register your product** upon purchase and enjoy the peace of mind of knowing your product is registered should anything happen.

If the unit fails to operate efficiently, is broken or other problems arise, unplug and do not operate. Ask for advice by calling Tradeware.

To Claim, the fan should be returned to the place of purchase or via the website within the warranty period.

Such claims must include:

- Details of the alleged defect or fault;
- Evidence of the claim; and
- Proof of purchase documentation which clearly shows the date and place of purchase.

Please visit [www.dynabreeze.com.au](http://www.dynabreeze.com.au) for more details





**Tradeware**

**Tradeware**

45 Birralee Road, Regency Park

South Australia 5010

[info@tradeware.com.au](mailto:info@tradeware.com.au)

AU 1300 658 494

NZ 0800 689 960

[www.tradeware.com.au](http://www.tradeware.com.au)

---

Due to continual product development, please note the information and content provided may not be final and may be subject to changes.

